



# MAGNAGOLD

TSX-V: MGR | OTCQB: MGLQF

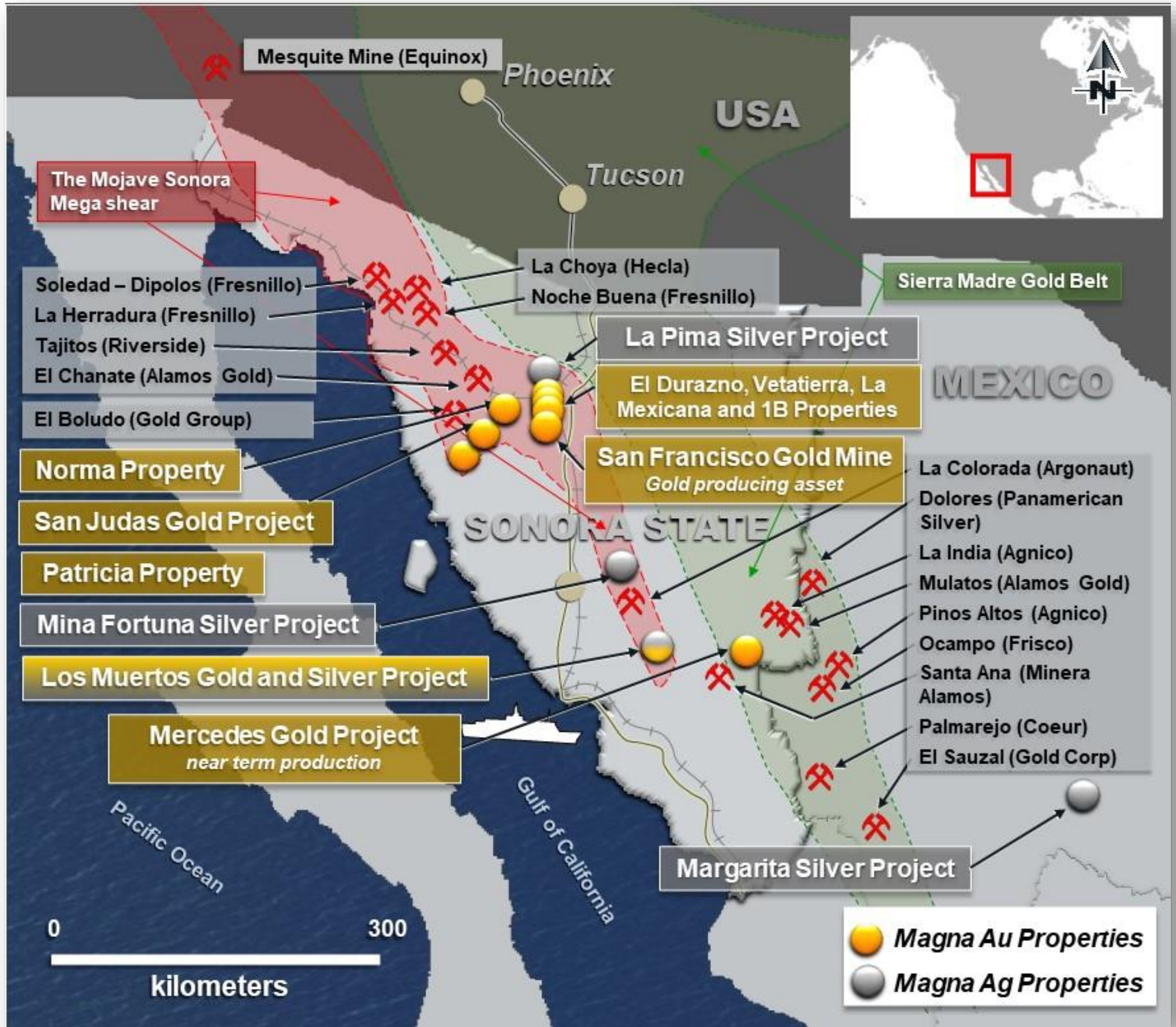
## Creating Mexico's Next Mid-Tier Gold Producer

Technical - LOM Presentation

October 2021

San Francisco Mine





## Location

Our mining properties are located in the States of **Sonora** and **Chihuahua, Mexico**, the best jurisdictions for mining in the Country.

# San Francisco Mine – Layout





# San Francisco Mine – Mineral Reserves and Resources

See technical report entitled 'NI 43101F1 Technical Report Pre-Feasibility Study for the San Francisco Gold Project, Sonora, Mexico' dated August 28, 2020 (the San Francisco Technical Report)

## Mineral Reserves at \$1,350 USD Gold:

(Current mine plan)

Category	Tonnes	Au (g/t)	Gold (ozs)
Proven	21,058,000	0.511	346,000
Probable	25,789,000	0.49	406,000
<b>Total</b>	<b>46,847,000</b>	<b>0.500</b>	<b>752,000</b>
Low Grade Stockpile	782,000	0.256	6,000

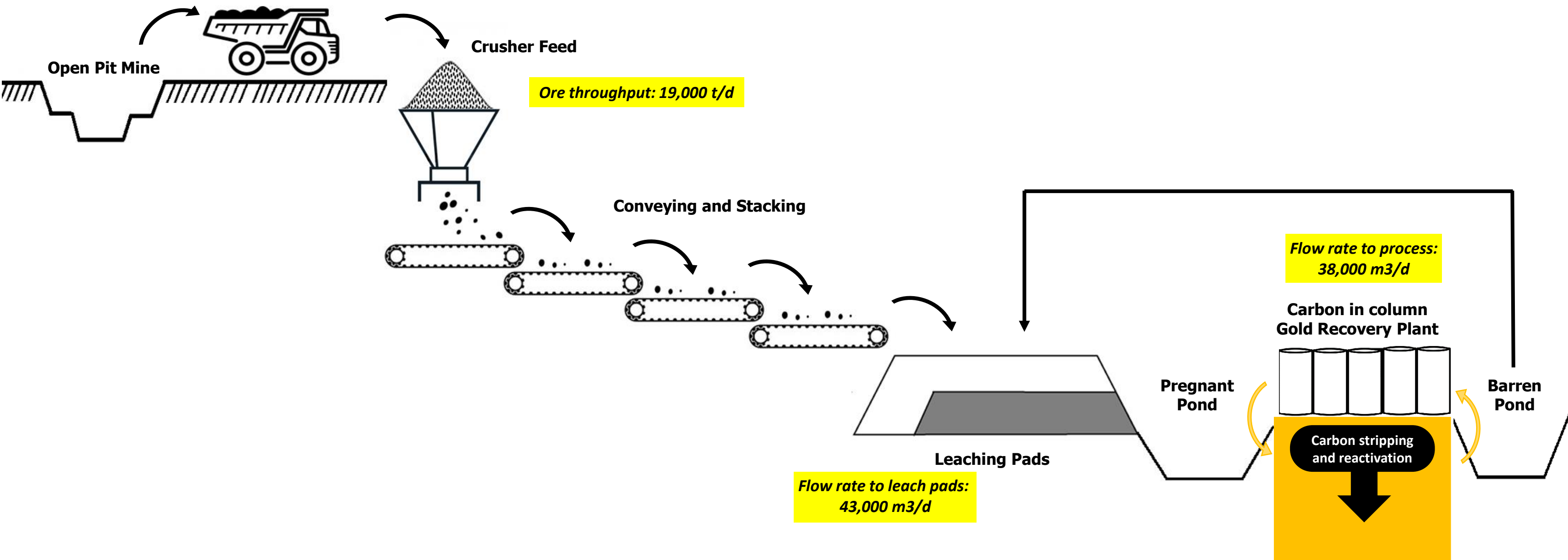
## Mineral Resources at \$1,500 USD Gold:

Category	Tonnes	Au (g/t)	Gold (ozs)
Measured	34,675,000	0.462	515,000
Indicated	65,025,000	0.437	914,000
<b>Measured and Indicated</b>	<b>99,700,000</b>	<b>0.446</b>	<b>1,430,000</b>
Inferred	11,374,000	0.467	171,000

**Strip Ratio** 2.5

- 1 All Mineral Reserves and Mineral Resources have been calculated in accordance with the standards of the Canadian Institute of Mining, Metallurgy and Petroleum and National Instrument 43-101, or the AusIMM JORC equivalent.
2. All Mineral Resources are reported inclusive of Mineral Reserves.
3. Mineral Resources which are not Mineral Reserves do not have demonstrated economic viability.
4. Mineral Reserves are estimated using appropriate recovery rates and US\$ commodity prices of \$1,350 per ounce of gold.
5. Mineral Resources are estimated using US\$ commodity prices of \$1,500 per ounce of gold.

# Process Flowsheet

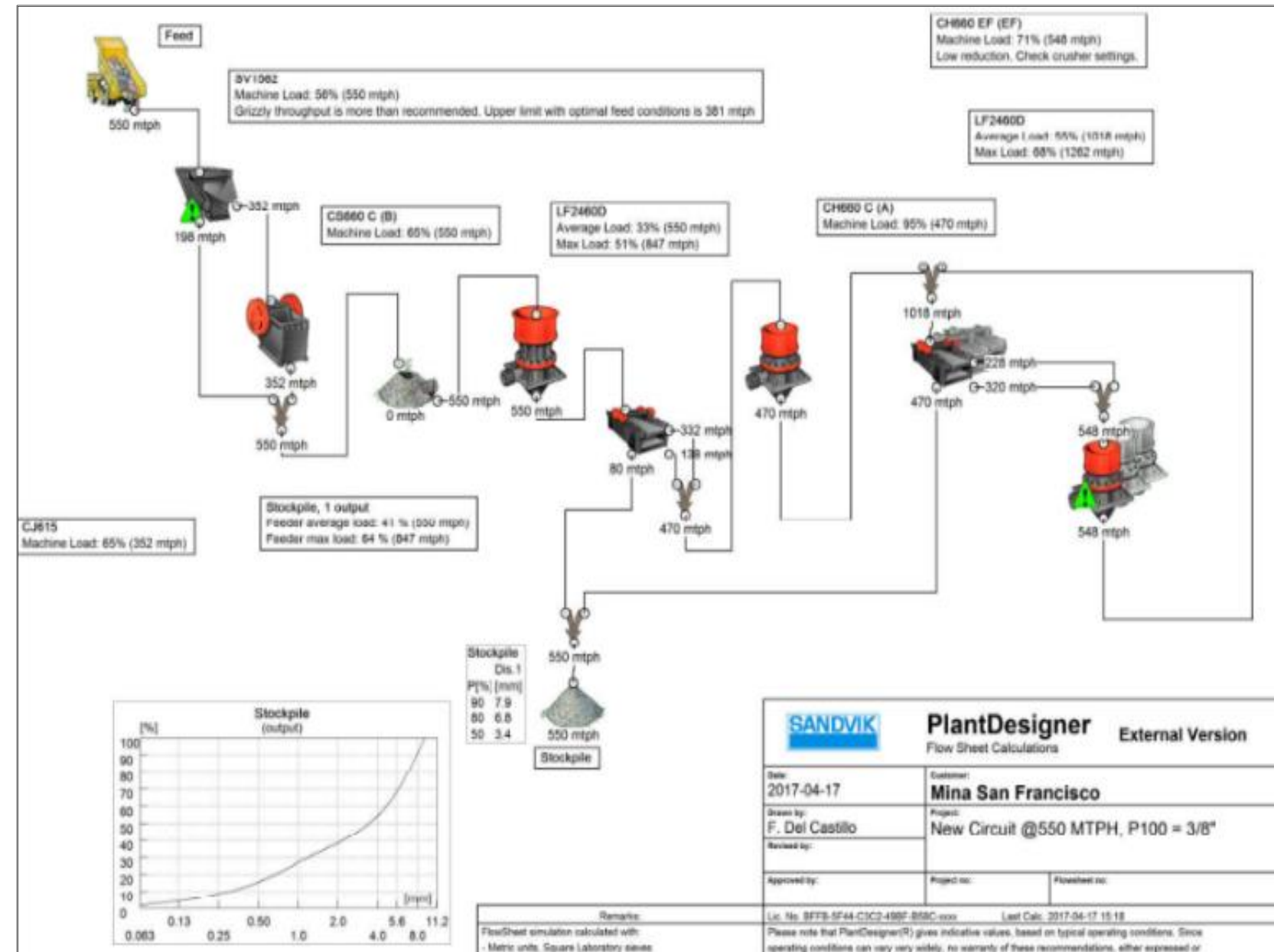
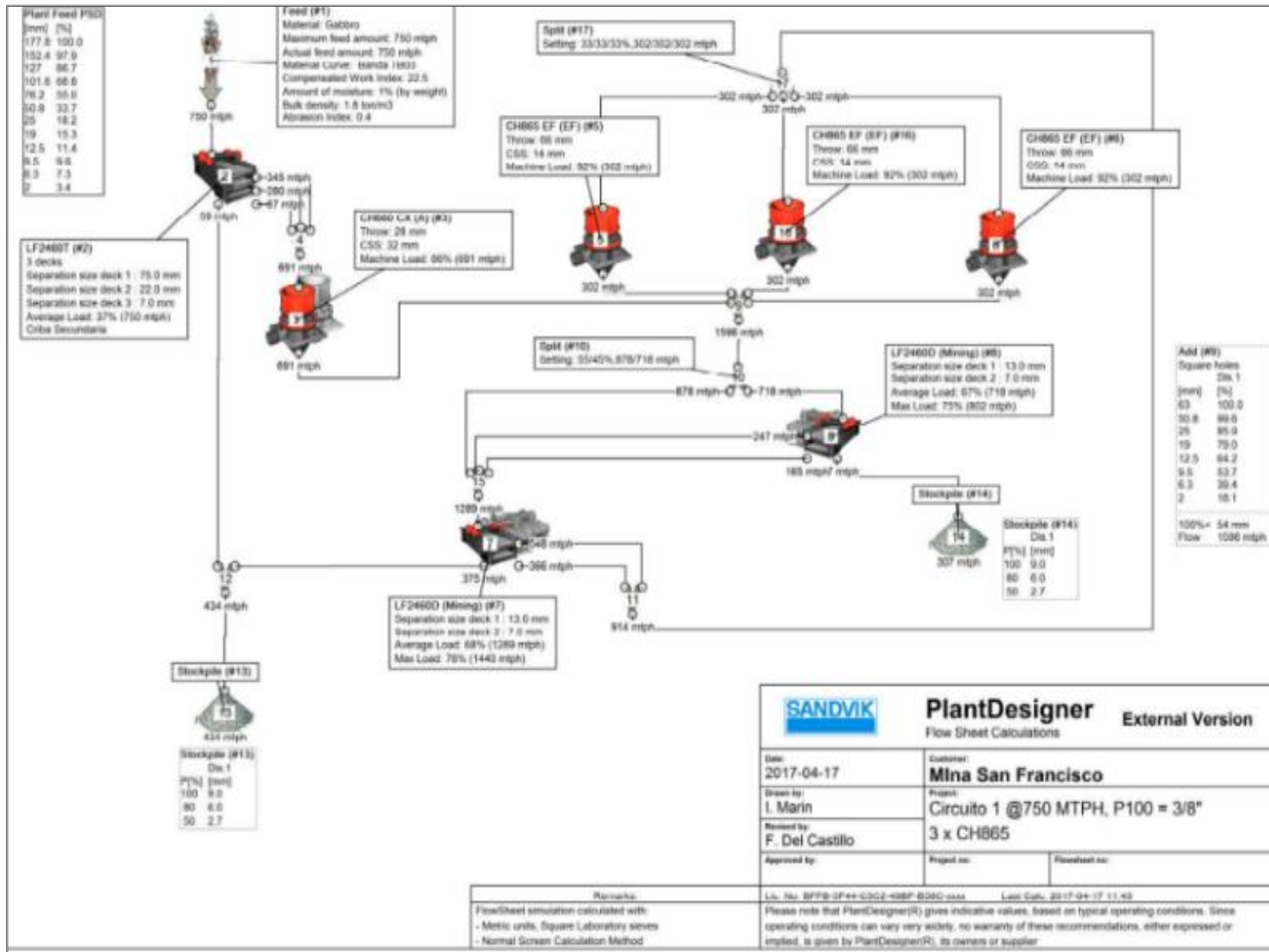


# Crushing Circuit 1 and 2 Flowsheet



## Crushing Circuit 1

## Crushing Circuit 2

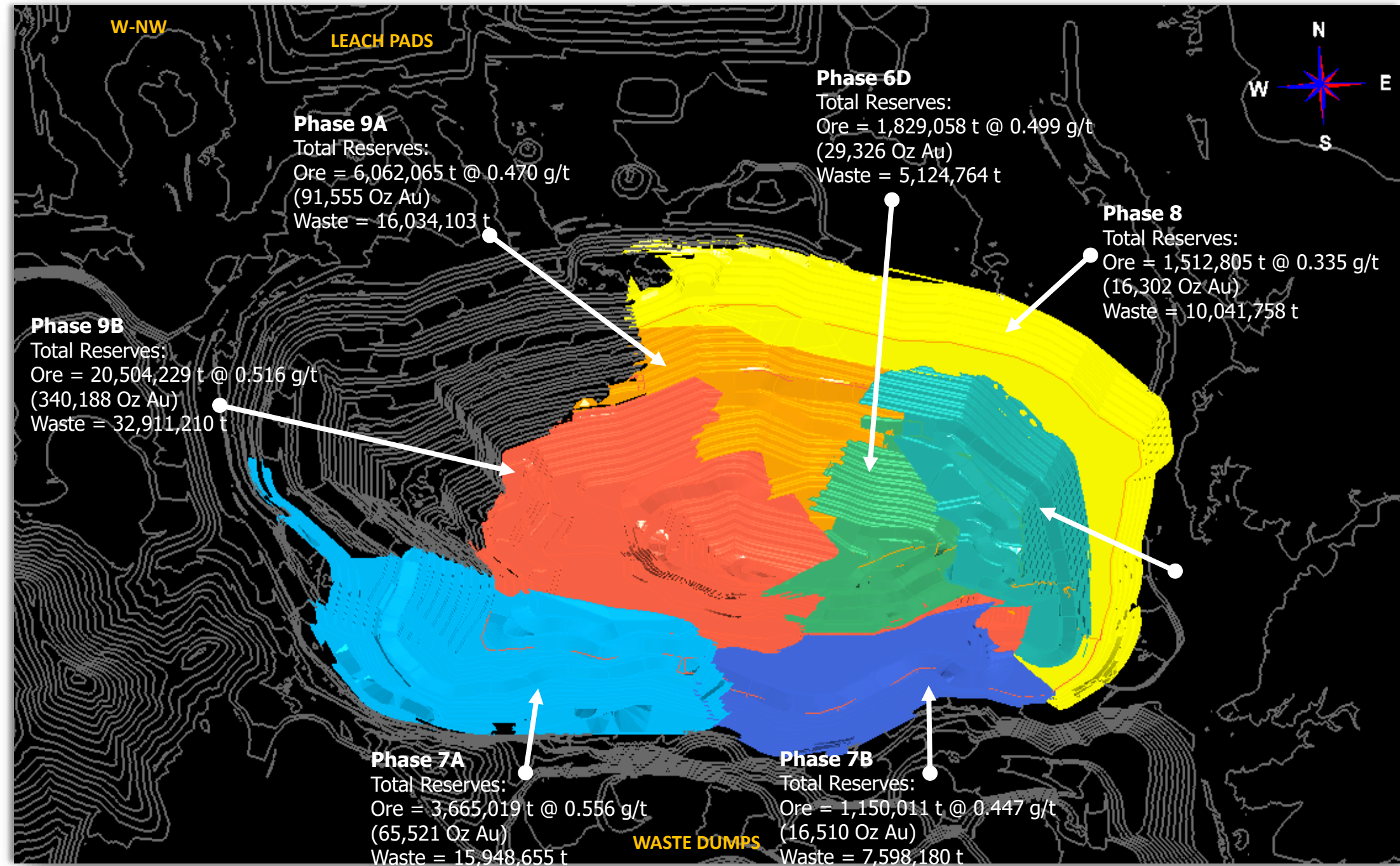


# San Francisco – Mining Phases



## Summary of Parameters

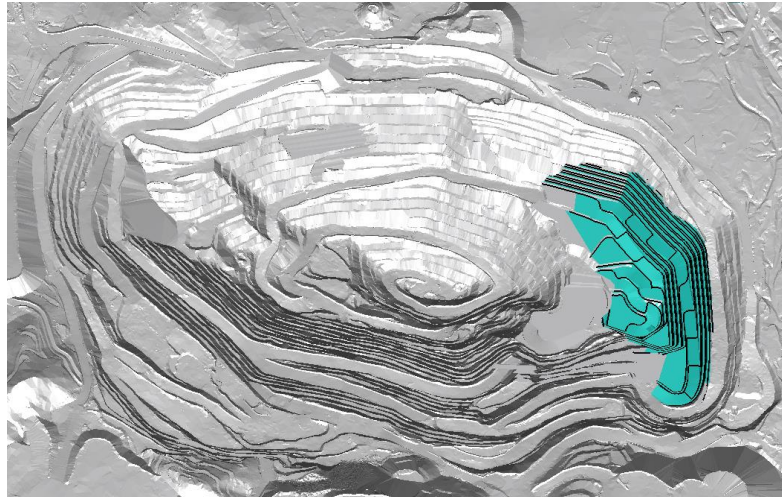
Mine Life	~8 years
Avg. Annual Gold Production	69 kozs <sup>1</sup>
Total Gold Production	527 kozs
Avg. Cash Cost	US\$1,160/oz
Avg. AISC	US\$1,204/oz
5% Net Present Value (US\$1,450/oz)	\$80M
5% Net Present Value (US\$1,600/oz)	\$126M
5% Net Present Value (US\$1,800/oz)	\$186M
5% Net Present Value (Spot US\$1,950/oz)	\$231M



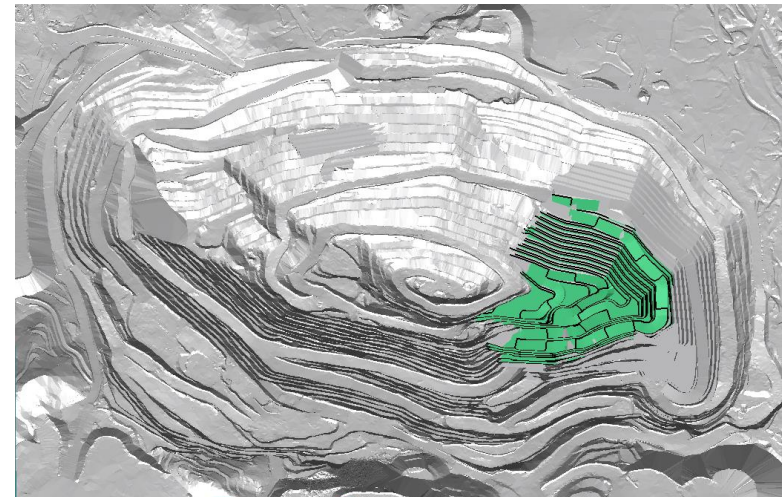
# San Francisco Topography at the end of each phase



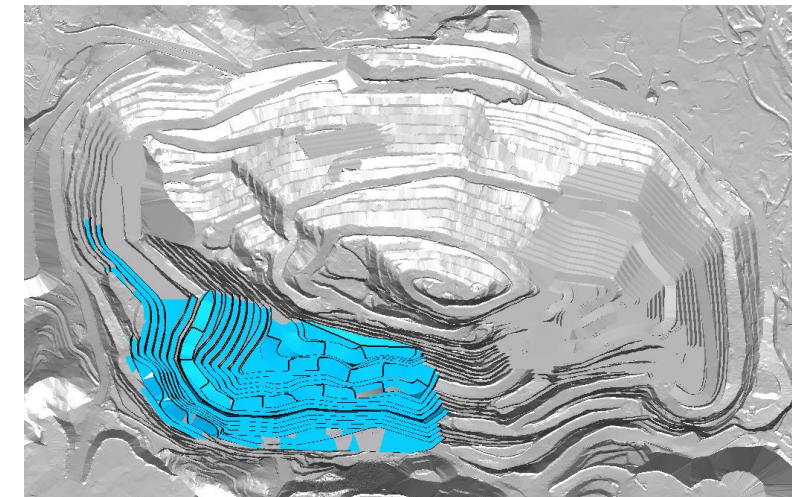
**Topography at the end of SF phase 6C  
(Q1,2022)**



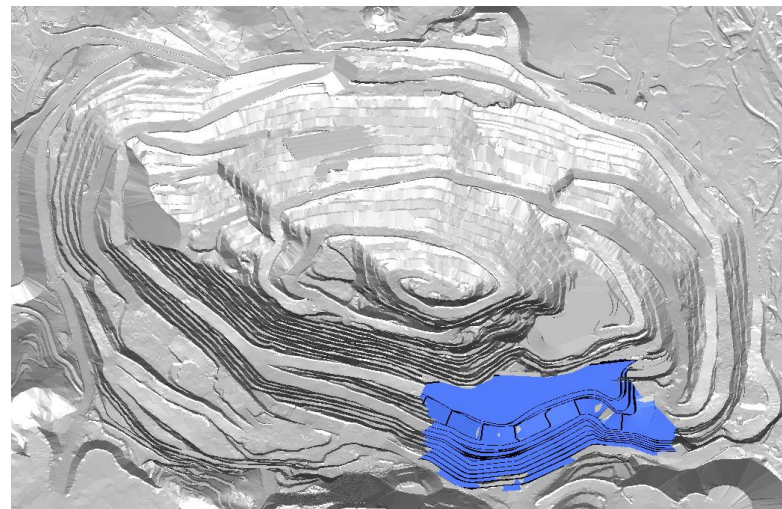
**Topography at the end of SF phase 6D  
(Q1,2024)**



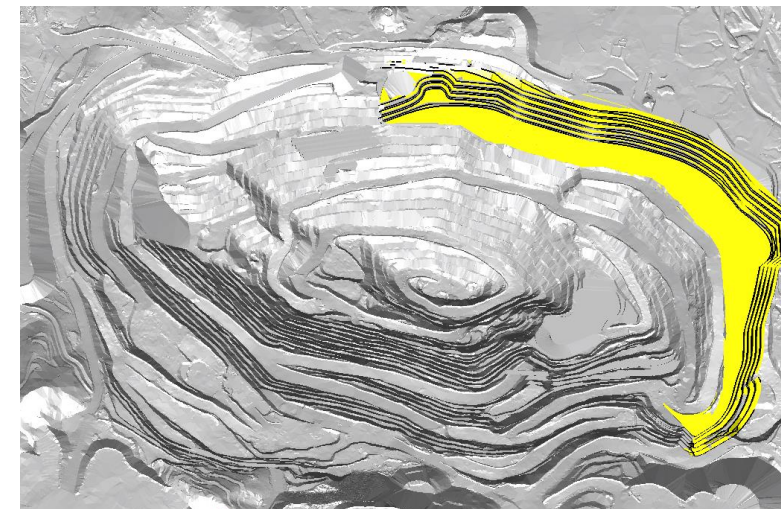
**Topography at the end of SF phase 7A  
(Y-2023)**



**Topography at the end of SF phase 7B  
(Y-2023)**



**Topography at the end of SF phase 8  
(Q1-2024)**

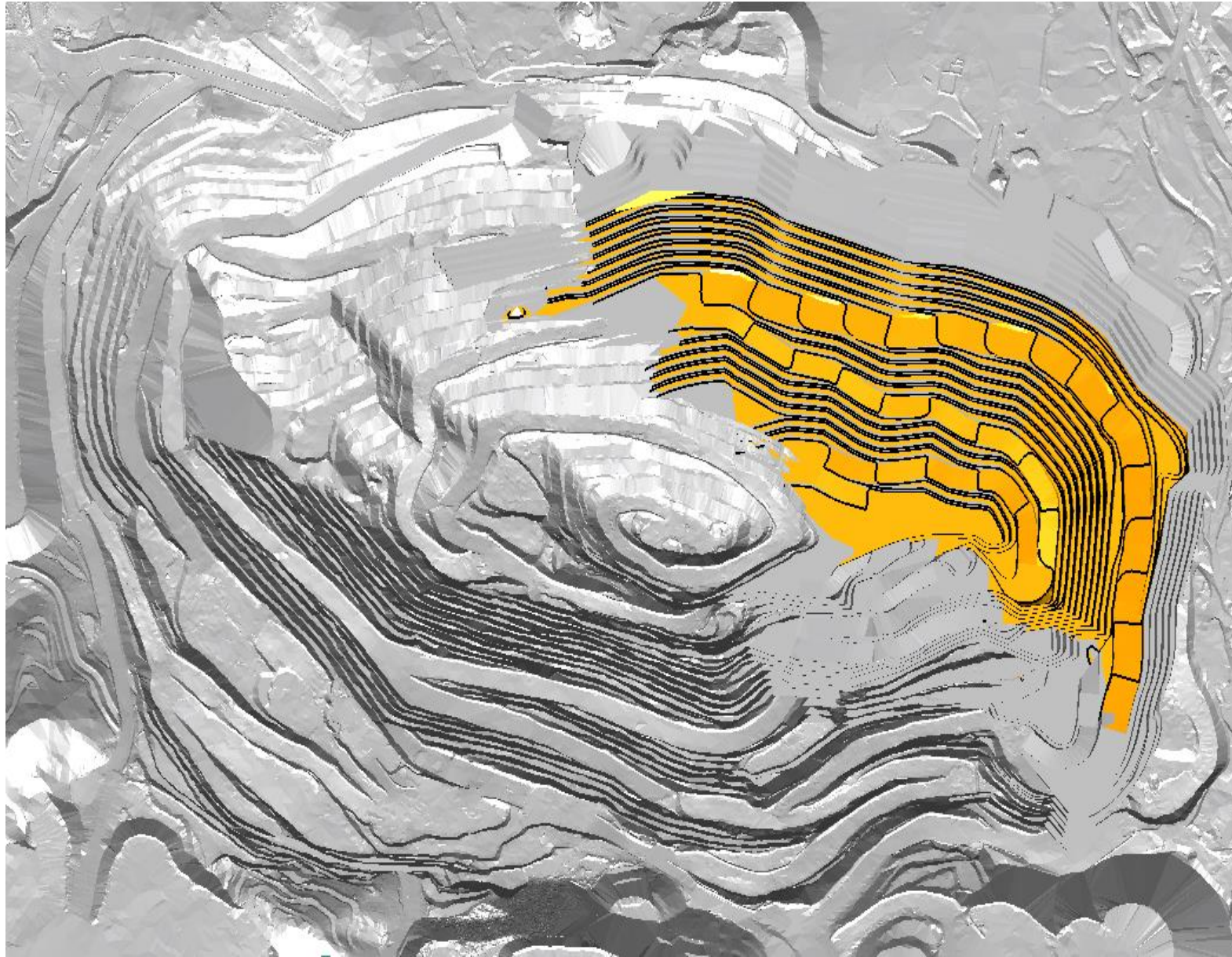




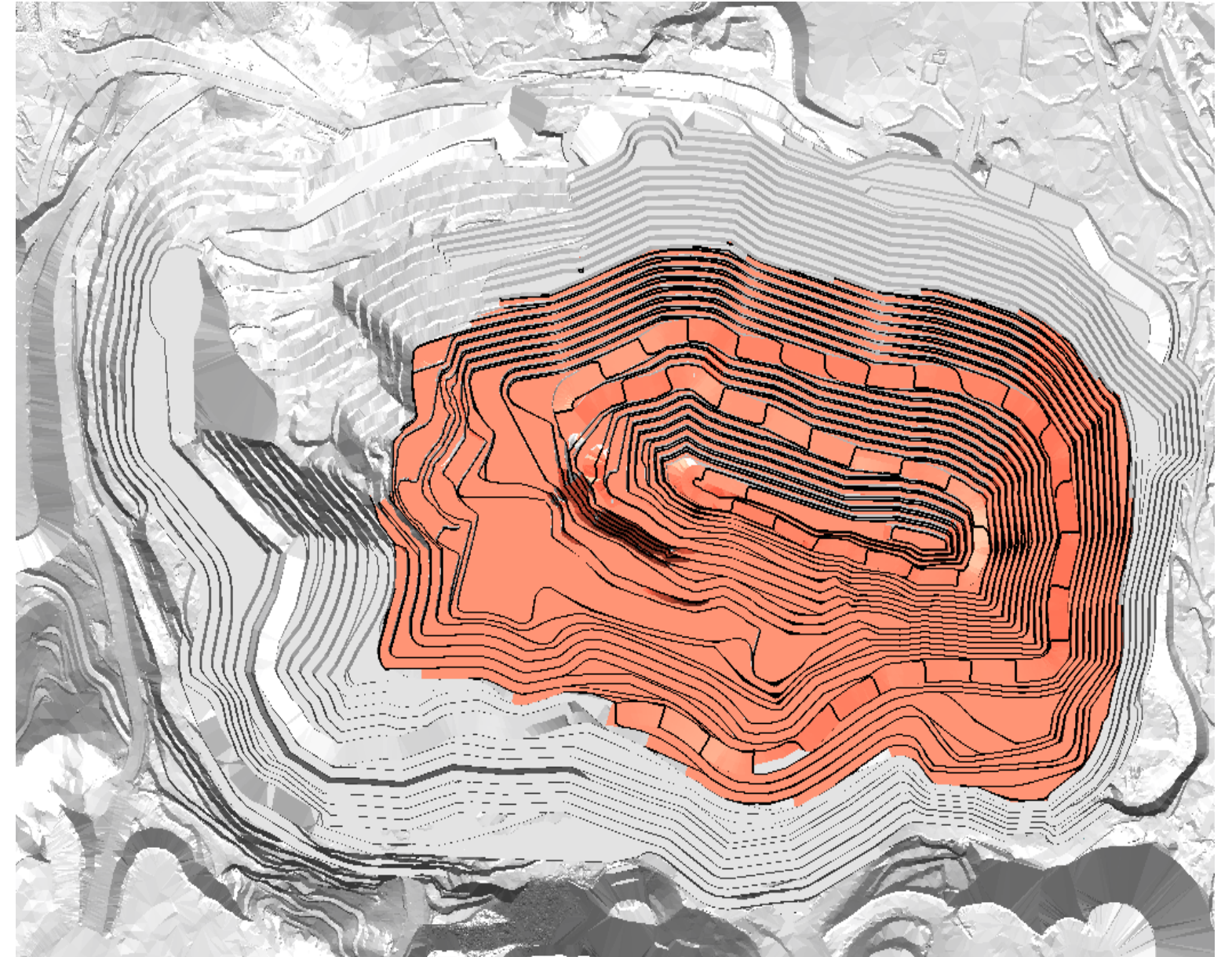
# San Francisco Topography at the end of each phase



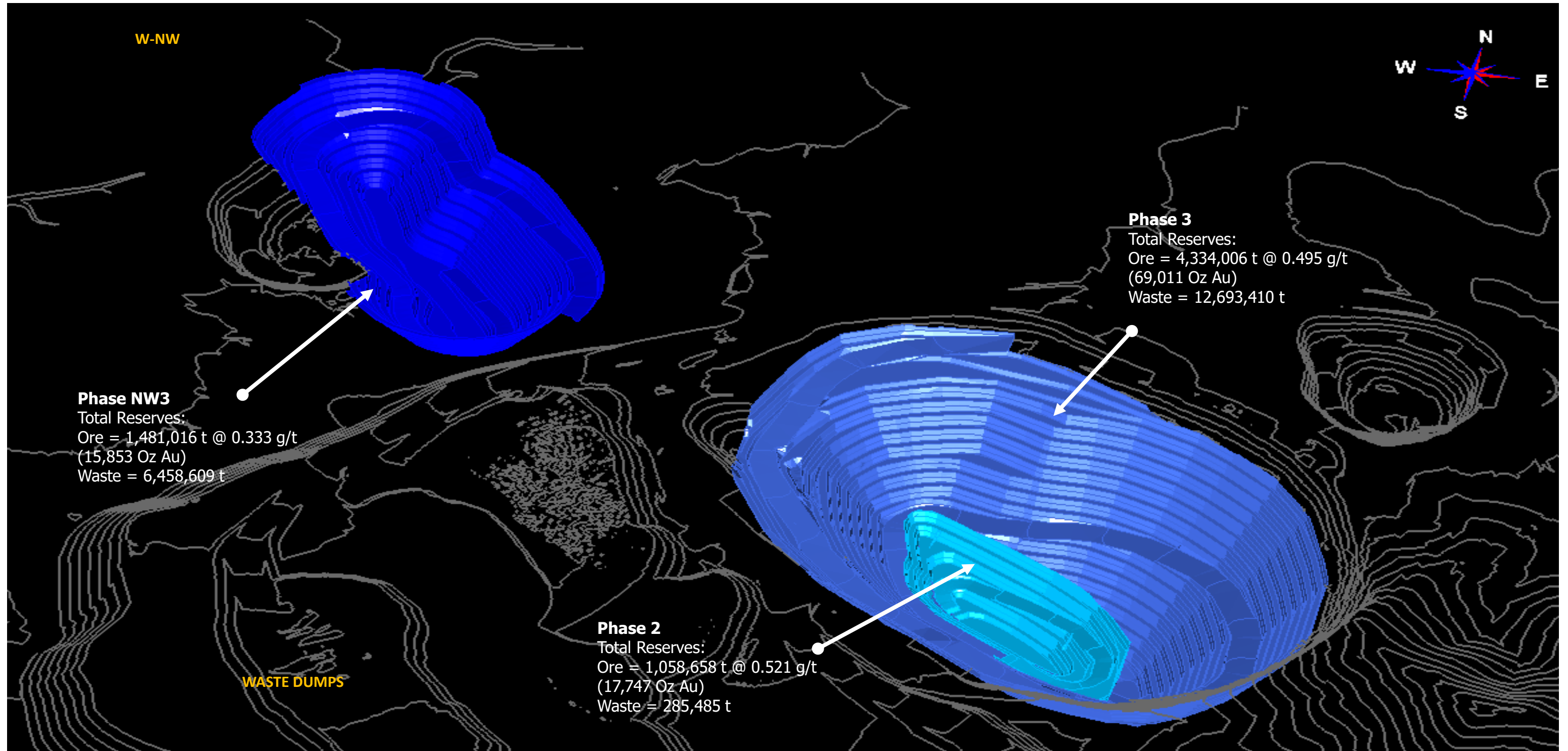
**Topography at the end of  
SF phase 9A (Y-2025)**



**Topography at the end of  
SF phase 9B (Y-2027)**



# La Chicharra – Mining Phases



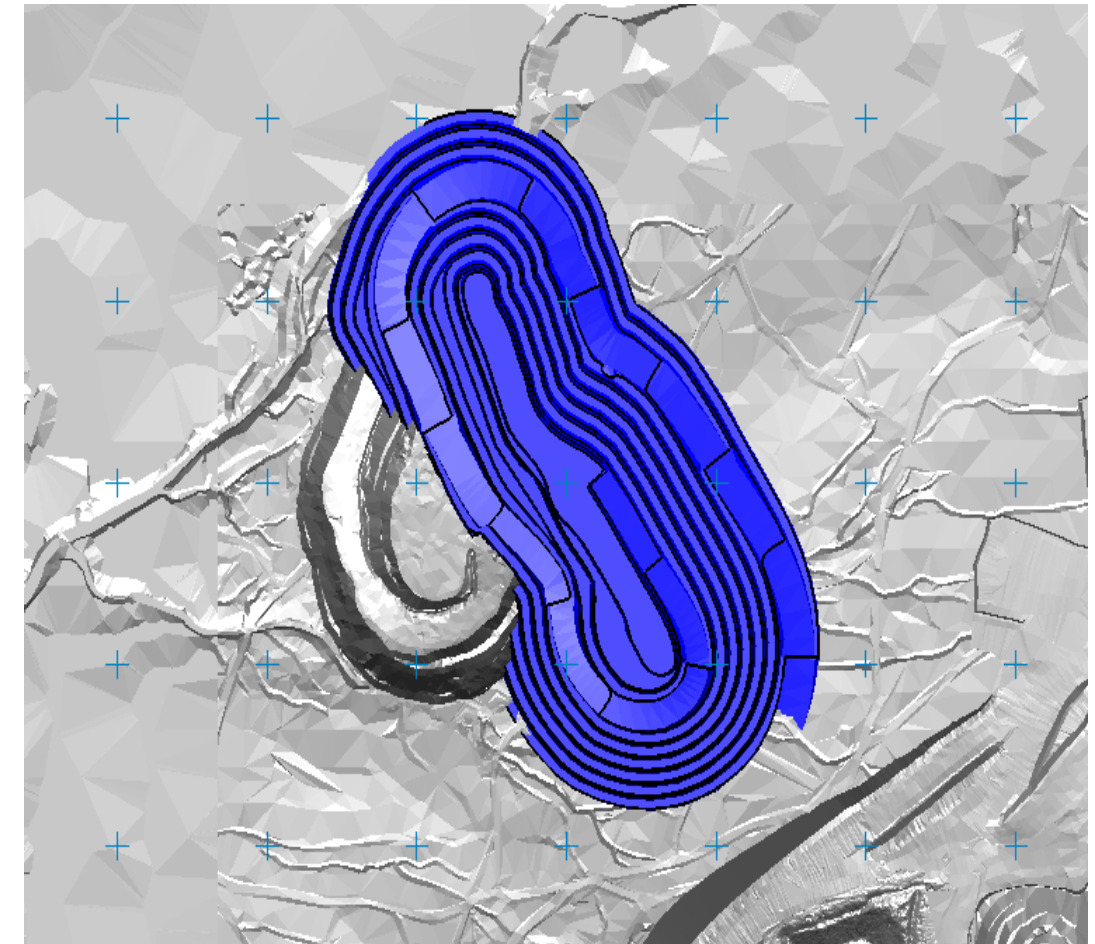
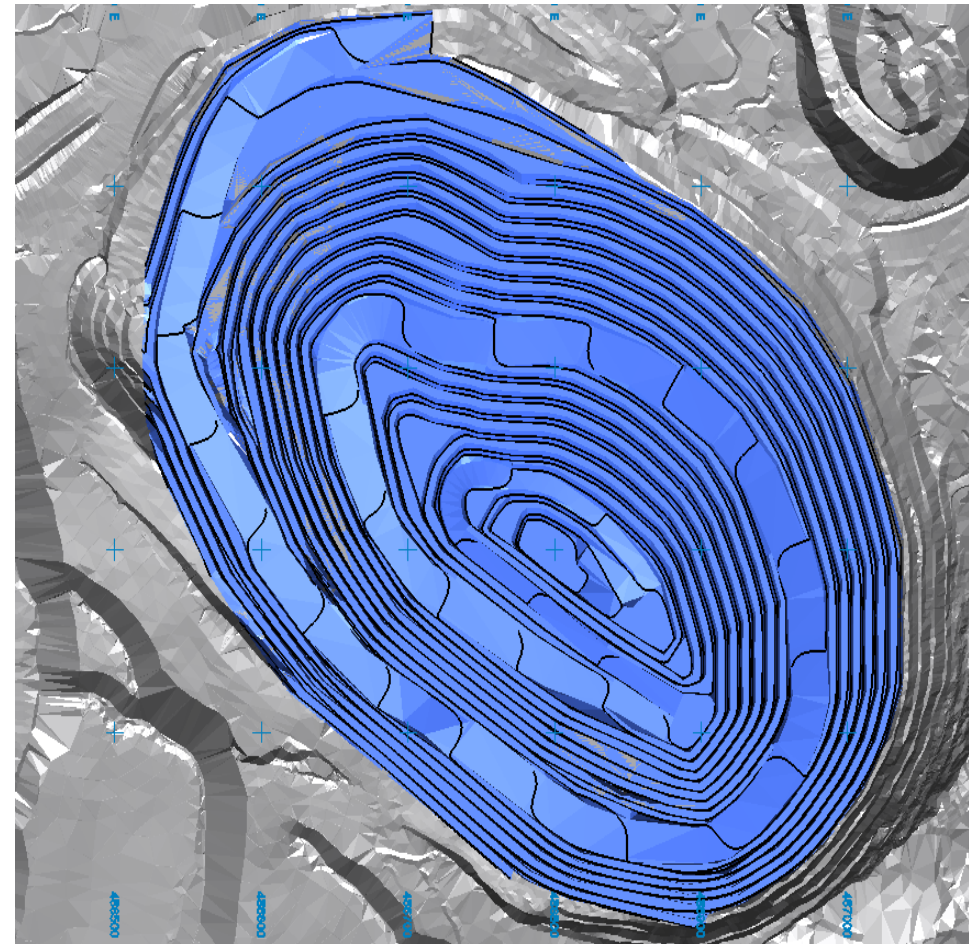
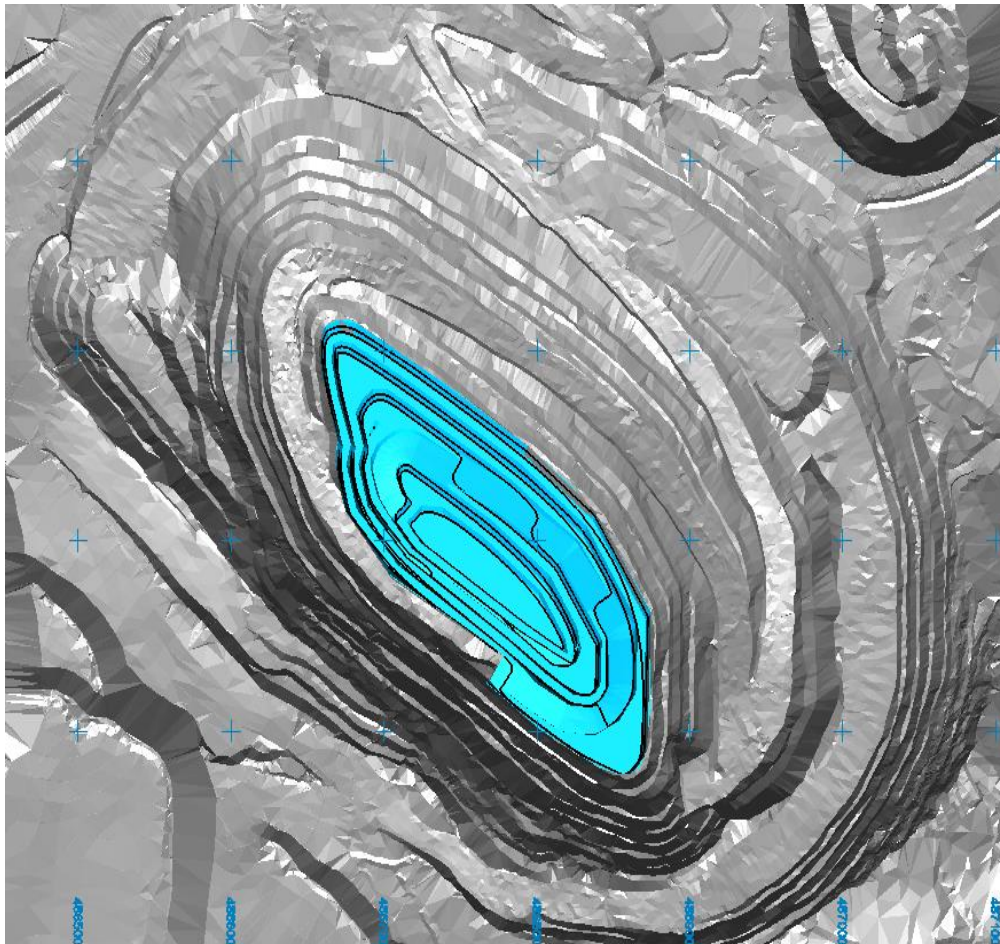
# La Chicharra Topography at the end of each phase



**Topography at the end of  
LCH phase 2  
(Q4,2021)**

**Topography at the end of  
LCH phase 3  
(Y-2023)**

**Topography at the end of LCH  
phase NW3  
(Y-2023)**



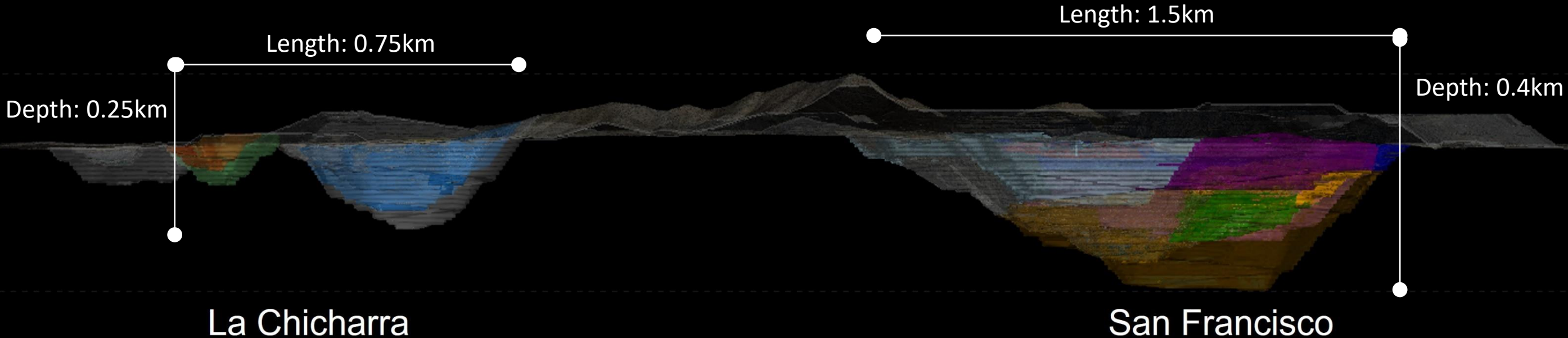
# San Francisco Mine – Cross Section



NW

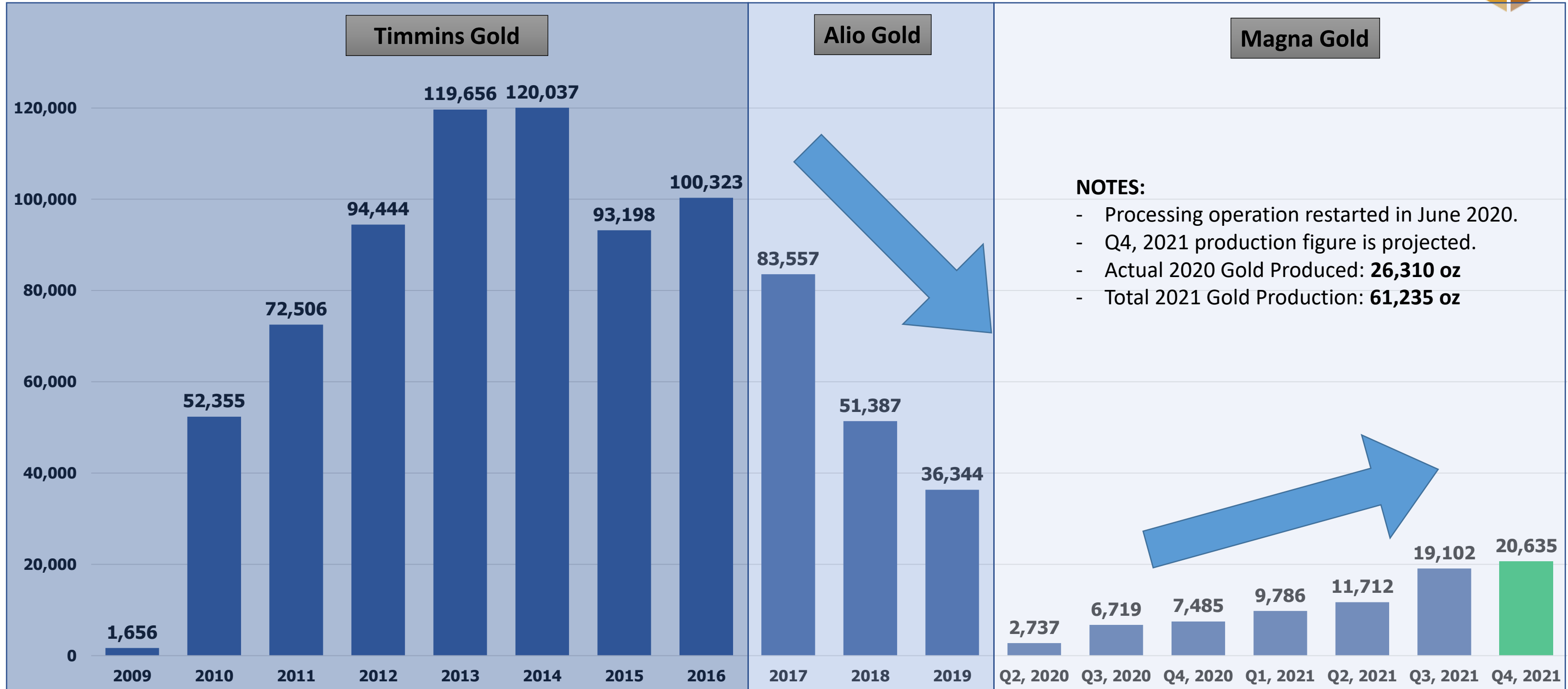
SE

## San Francisco Mine Section



Plunge 00  
Azimuth 026

# Gold Production



# San Francisco Mine – Historical Performance

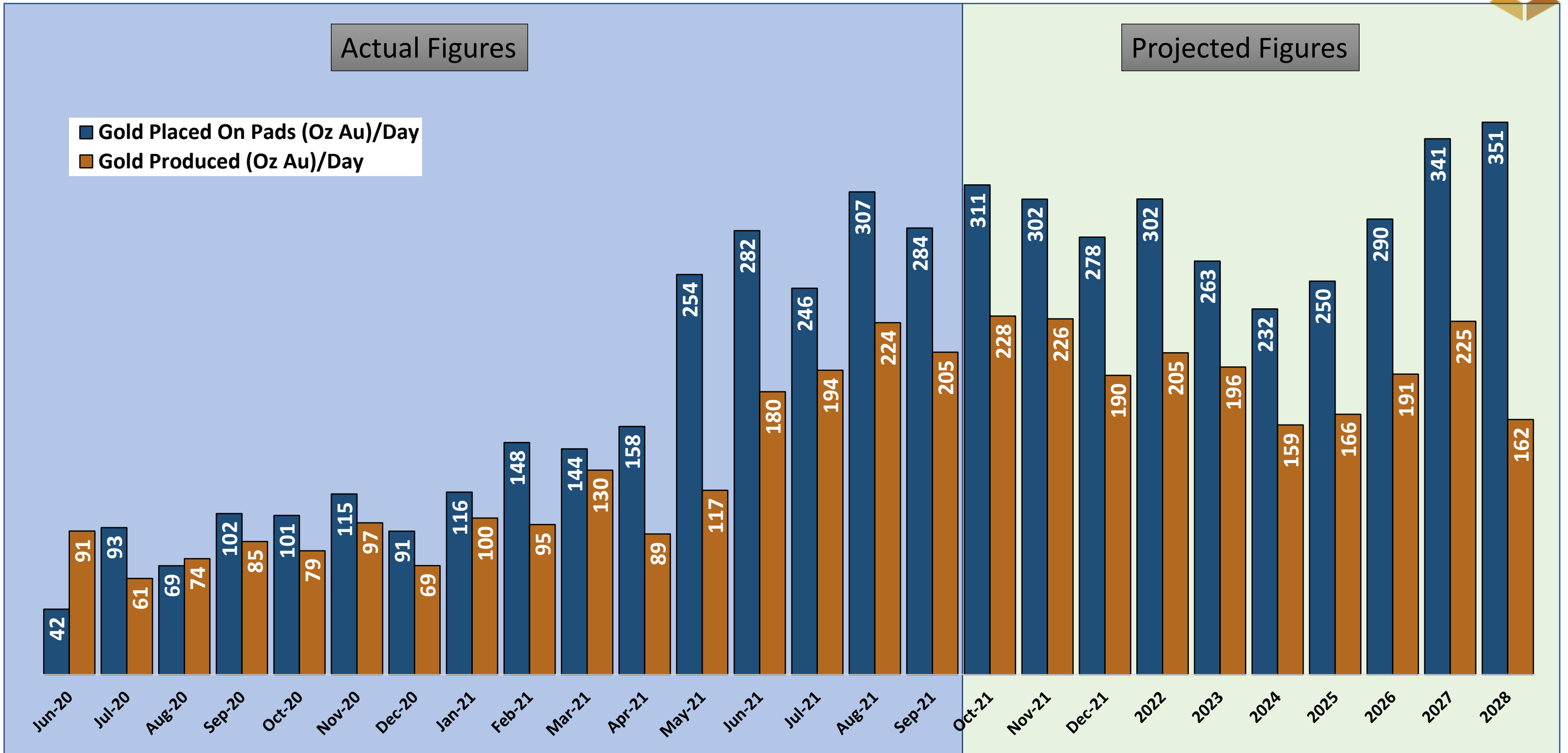


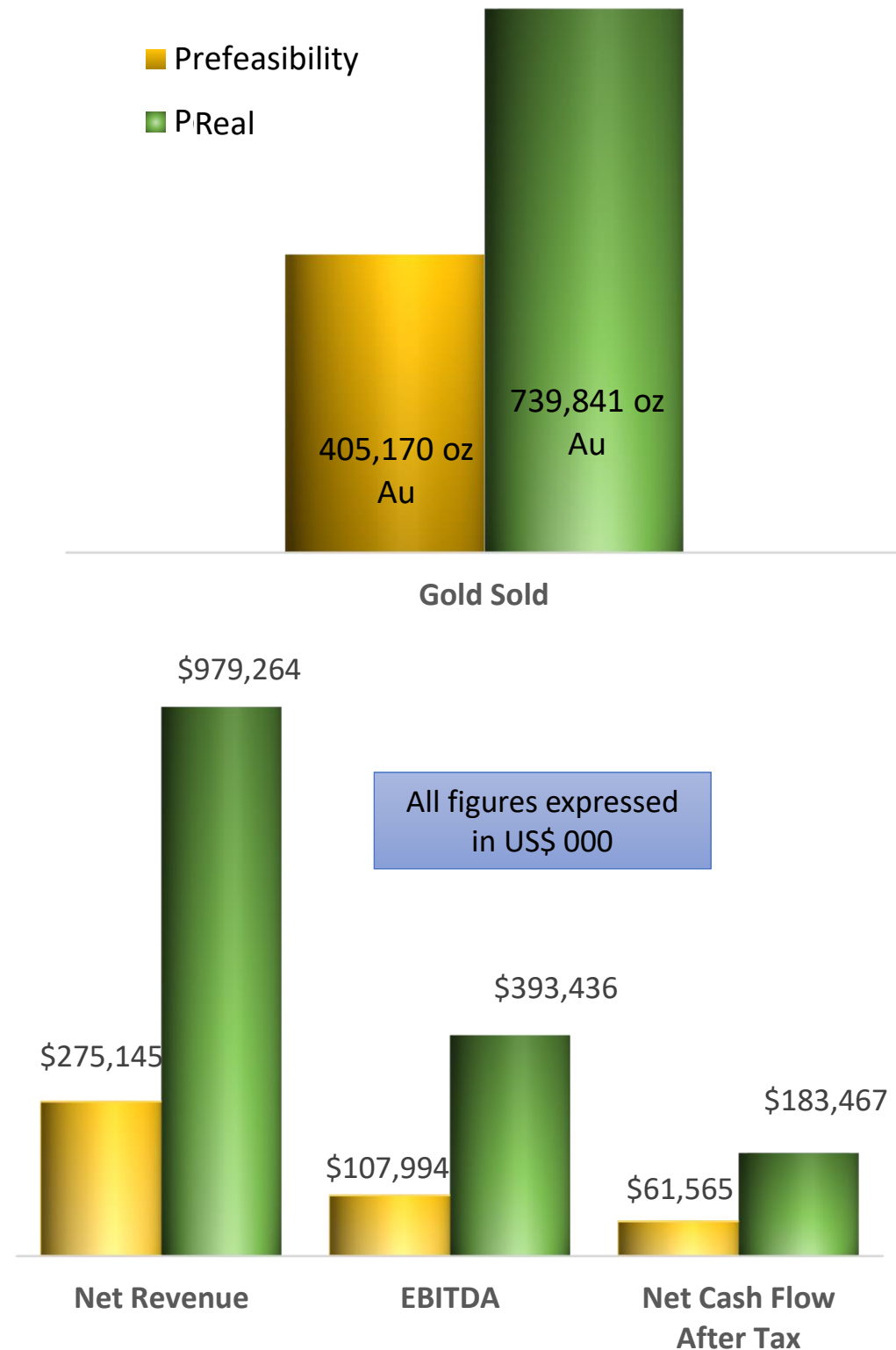
Period	Ore Placed On Pads (tonnes)	Gold Grade (g/t)	Gold Placed On Pads (Oz Au)	Gold Produced (Oz Au)	Annual Recovery Rate
2009	284,777	0.683	6,249	1,656	26.51%
2010	3,908,880	0.783	98,353	52,355	53.23%
2011	5,138,004	0.832	137,456	72,506	52.75%
2012	5,516,627	0.846	150,008	94,444	62.96%
2013	7,466,771	0.822	197,334	119,656	60.64%
2014	8,622,579	0.618	171,421	120,037	70.02%
2015	8,448,731	0.508	138,031	93,198	67.52%
2016	7,652,642	0.579	142,516	100,323	70.39%
2017	7,537,043	0.451	109,202	83,557	76.52%
2018	6,511,117	0.444	92,984	51,387	55.26%
2019	6,155,260	0.258	51,113	36,344	71.11%
2020	1,728,296	0.338	18,770	26,310	140.17%
Jan - Sep 2021	3,849,245	0.476	58,933	40,600	68.89%
<b>TOTAL</b>	<b>72,819,969</b>	<b>0.586</b>	<b>1,372,370</b>	<b>892,375</b>	<b>---</b>

## NOTES:

- Gold production performance from 2011 to 2017 = 97,674 oz/year avg.
- Q1, 2014 best performance achieved with 35,413 oz Au produced.

# San Francisco Mine – Daily Performance





Historical Performance of San Francisco Mine		Pre-Feasibility Report (2008 – 2013)	Historical Performance (2008 – 2017)
<b>Gold Placed on Pads</b>	Oz Au	<b>611,090</b>	<b>1,150,384</b>
<b>Gold Sold</b>	Oz Au	<b>405,170</b>	<b>739,841</b>
Net Revenue	US\$ 000	\$275,145	\$979,264
Operating Cost	US\$ 000	\$167,152	\$585,828
<b>Net Cash Operating Margin (EBITDA)</b>	US\$ 000	<b>\$107,994</b>	<b>\$393,436</b>
Capital Expenditures (includes deferred stripping)	US\$ 000	\$46,428	\$209,968
<b>Net Cash Flow Before Tax</b>	US\$ 000	<b>\$61,565</b>	<b>\$183,467</b>
Taxation Payable (income tax + mining taxes + government royalties)	US\$ 000	\$17,313	\$83,163
<b>Net Cash Flow After Tax</b>	US\$ 000	<b>\$44,252</b>	<b>\$100,304</b>
Cash Cost per Tonne Ore	US\$/t	\$ 7.38	\$ 11.83
All-in Sustaining Cost per Tonne Ore	US\$/t	\$ 9.44	\$ 13.27
Cash Cost per Ounce	US\$/oz	\$ 413	\$ 792
AISC per Ounce	US\$/oz	\$ 564	\$ 1,040
Net Present Value (10% Discount)	US\$ 000	\$25,466	\$62,303
Internal Rate of Return		39%	24%
EBITDA / Net Revenue		39.2%	40.2%
After-tax FCF / Net Revenue		16.1%	10.2%





**MAGNAGOLD**

Precious Metals Exploration, Development and  
Production in Stable Jurisdictions.

**Thank you**

TSX-V: **MGR** | OTCQB: **MGLQF**